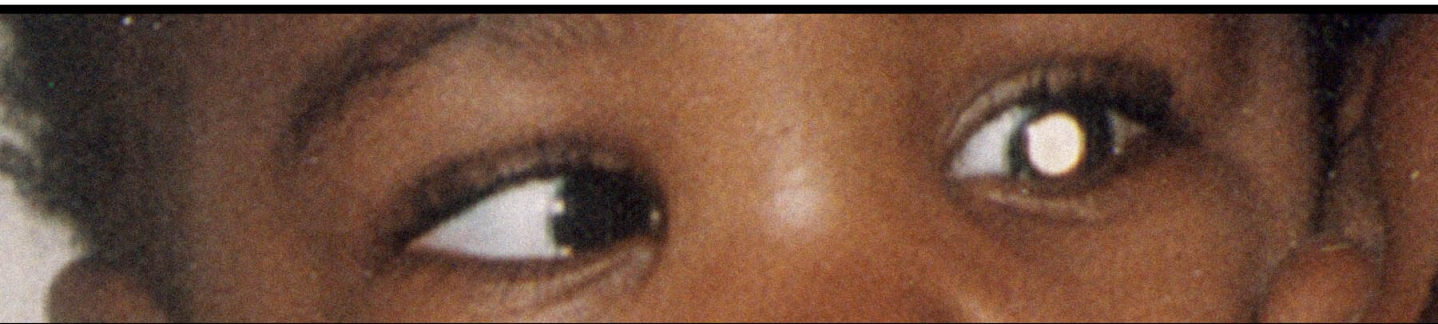


# Retinoblastoma Cancer

If you saw the signs...  
would you know?



Retinoblastoma (RB) is a rare and horrific childhood eye cancer that primarily affects children under the age of 7. Without early detection and appropriate treatment, RB is always fatal.

## Critical Clues

- A "White/Yellowish Pupil" in a photograph of a child's eye
- A glimpse of a "White Pupil" in a child's eye

***Avery's "White Pupil" is the actual cancer tumor***



**AVERY'S  
JOURNEY**

A white pupil may not be retinoblastoma cancer,  
**but are you willing to take that chance?**

"White Pupil"- Seek Immediate Medical Attention!

[www.averysjourney.ca](http://www.averysjourney.ca) 905-578-9832